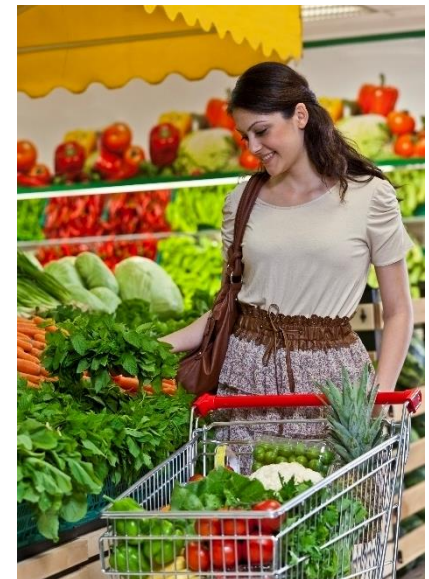


Challenges in food cold chain management: Global Standard and Traceability 4.0 - Barcode, RFID, IoT

ASEAN Warehouse 2018

GS1 Thailand, The Federation of Thai Industries
11 October 2018



Contents

-

Introduction to GS1 Standards and Traceability 4.0

A retail business:



Modern trade Era



Modern Trade with internal barcode



Point of Sale
(POS)



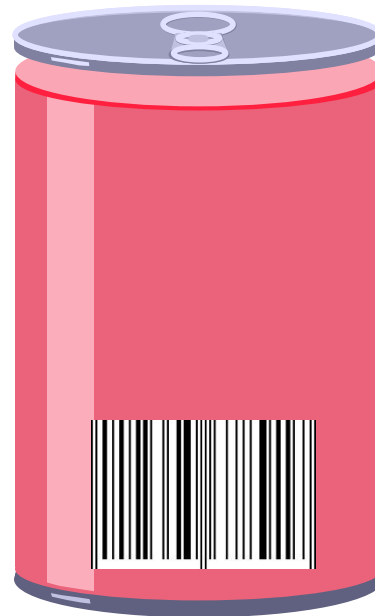
Modern Trade with internal barcode



Brand Owner

Manufacturer / Distributor

**Same product
with different product numbers**



I want 123456



Retailer 1



I want 654321



Retailer 2

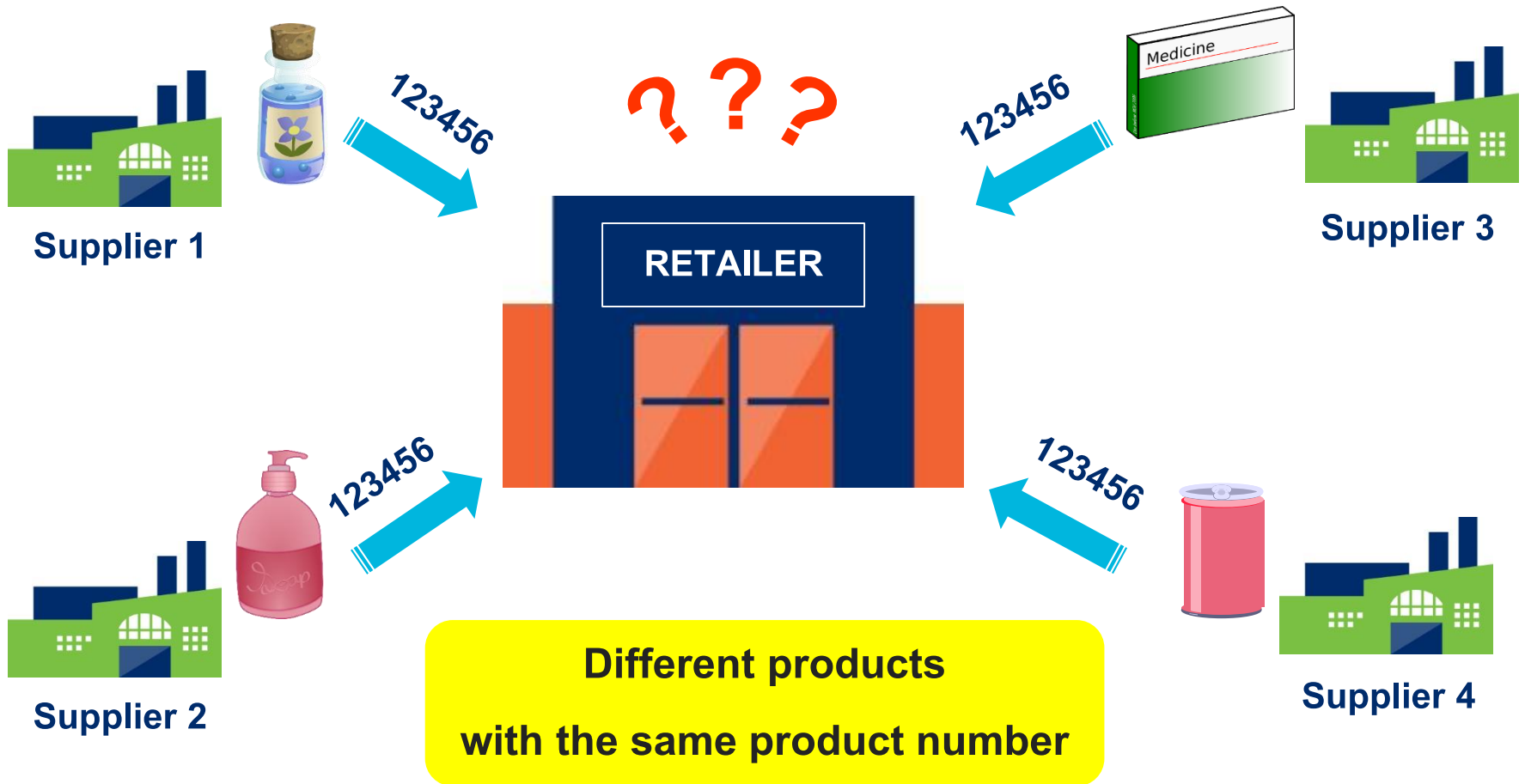


I want 000001



Retailer 3

Modern Trade with internal barcode



When the barcode is not standard



Global Standard Barcode = Trade Agreement



GS1 Organization



Uniform Code Council
UPC: Universal Product Code
America/Canada



European Article Number
EAN: European Article
Numbering System
Europe/Asia

1990



**The first of
Global Standard**

Not-for-profit

**120 GS1 Member
Organizations (MO)**

150 countries served

**Close to two million
user companies**

2,500 people helping us

GS1 Thailand



1988: TANC (Thai Article Numbering Council)
สถาบันรหัสแห่งไทย



1993: EAN Thailand Institute
สถาบันรหัสสากล

2005: GS1 THAILAND
สถาบันรหัสสากล

2018 – The 30th Anniversary



GS1 Thailand

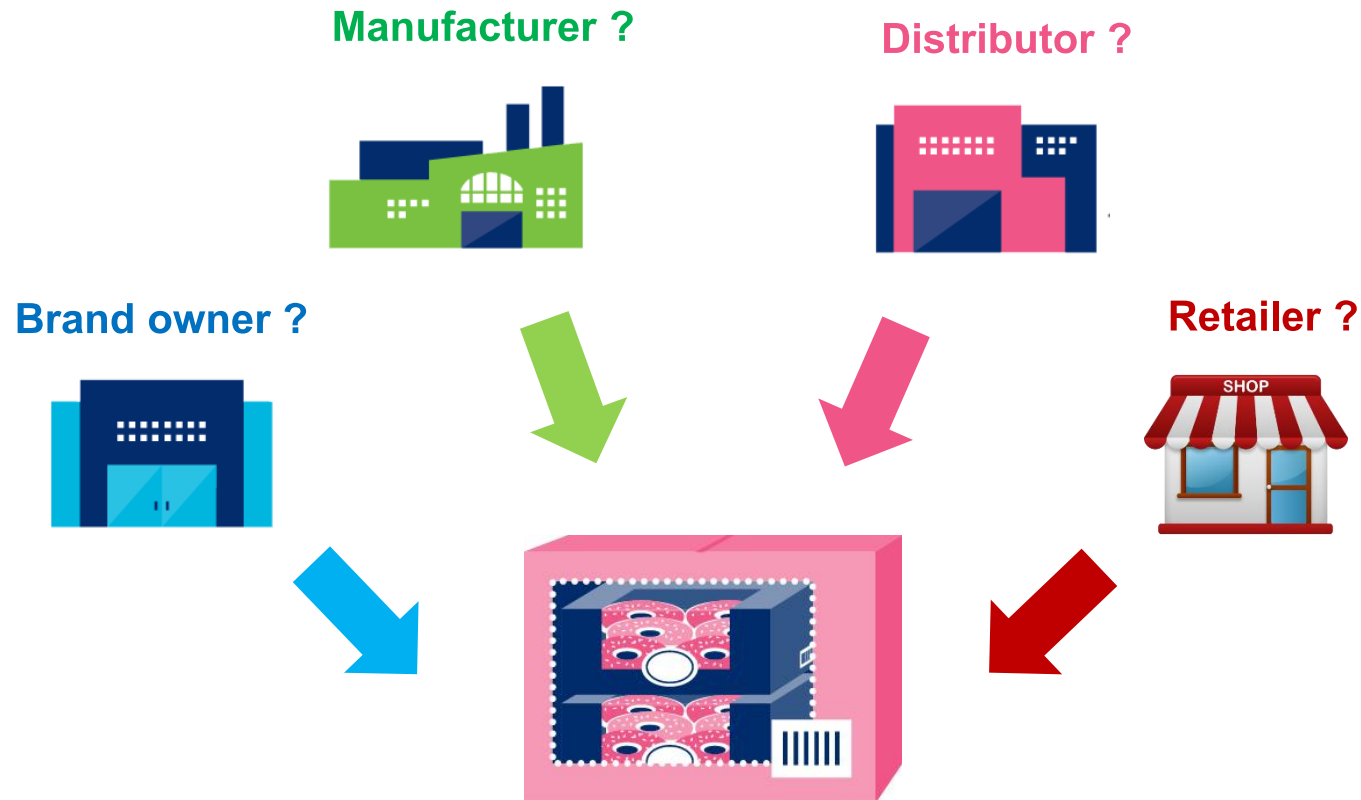


Our **vision** is a world where goods and related information move efficiently and securely for the benefit of businesses and people's lives

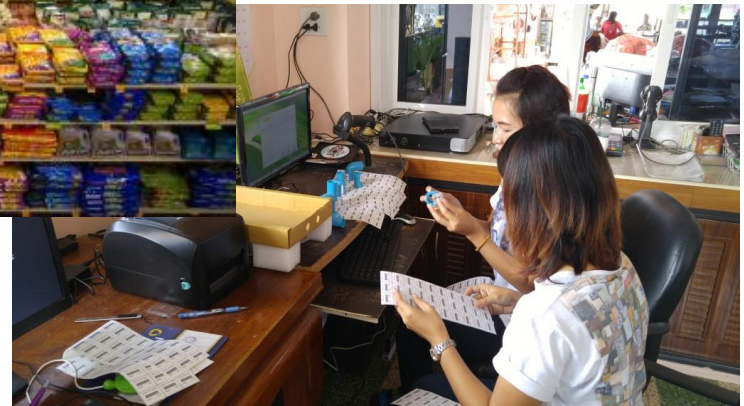
Our **mission** is to be the neutral leader enabling communities to develop and implement open global standards

We act as **a registry to issue GS1 Identity Numbers and EPC Identity Numbers** to members.

Who should apply for product barcode?



Who should apply for product barcode?



Do you know GS1 Barcode?



GS1 System of Standards

Identify

GS1 Standards for Identification

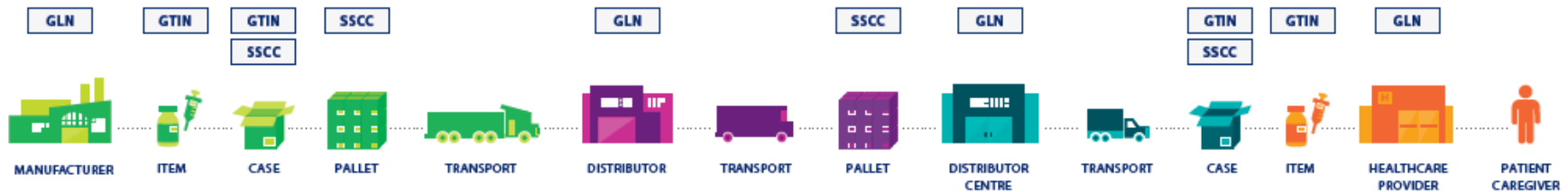
GS1 Identification keys

GLN Global Location Number

GTIN® Global Trade Item Number

SSCC Serial Shipping Container Code

EPC Serialized Global Trade Item Number



Capture

GS1 Standards for Automatic Identification & Data Capture

GS1 Barcodes and GS1 EPC/RFID

GS1 BARCODES

EAN/UPC



GS1-128



ITF-14



GS1 DataBar



GS1 DataMatrix



GS1 EPC/RFID

EPC HF Passive



EPC UHF Passive



Share

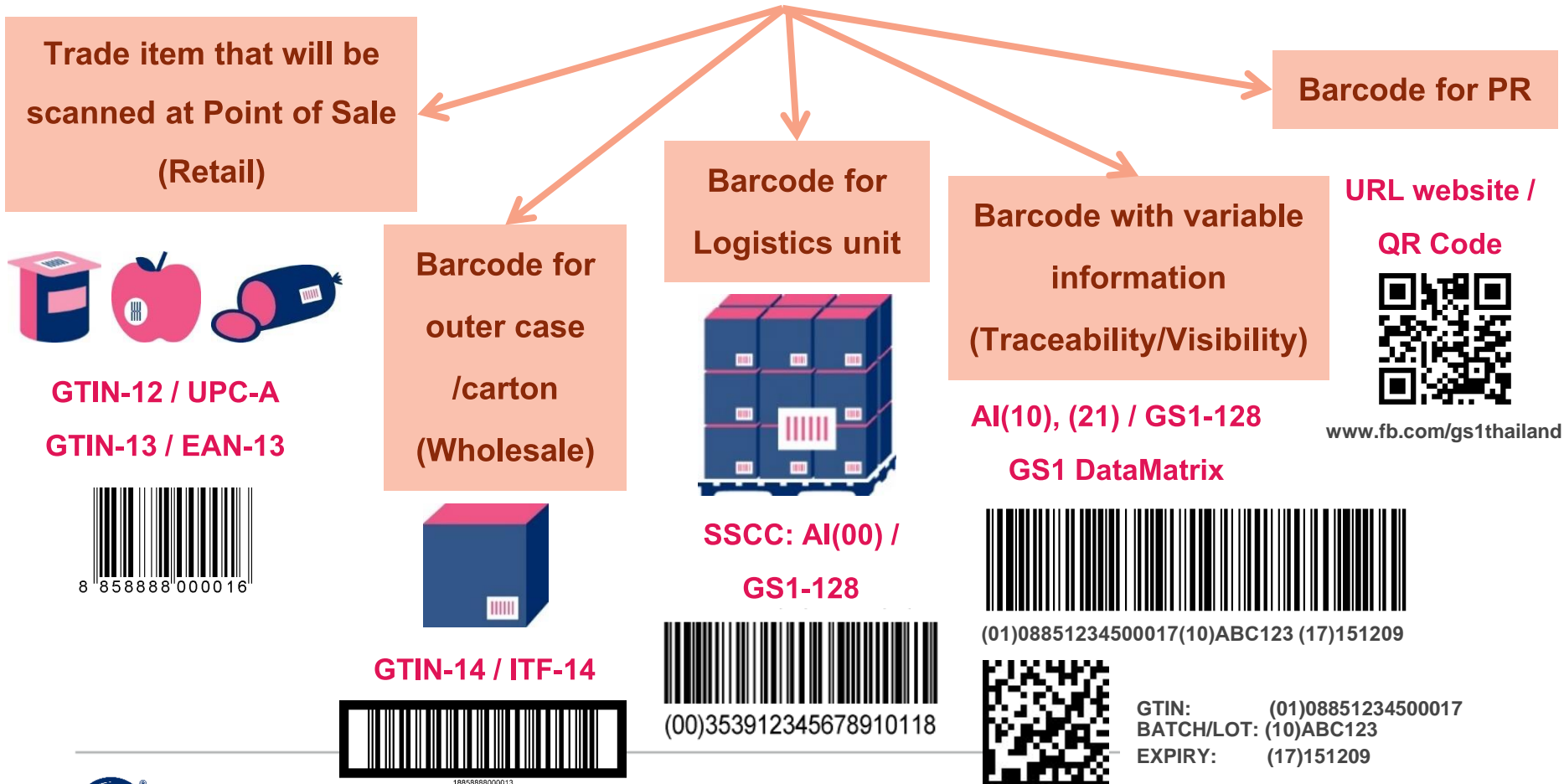
GS1 Standards for Automated Data Exchange

GS1 GDSN, GS1 EDI, and GS1 EPCIS

MASTER DATA GLN Registry for Healthcare®, Global Data Synchronization Network™ (GDSN®) **TRANSACTIONAL DATA** eCom (EDI) **EVENT DATA** EPC Information Services (EPCIS)

GS1 System of Standards

Selecting the right barcode



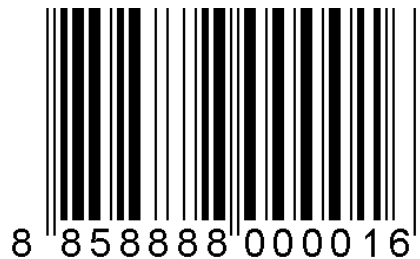
GS1 System of Standards

Barcode for retail product

GTIN-13 / EAN-13

GTIN-13 Identification Number

GS1 Country Prefix			Company Number					Item Reference				C
8	8	5	8	8	8	8	0	0	0	0	1	6



GS1 System of Standards

Barcode for wholesale product

GTIN-14 / ITF-14

GTIN-14 Identification Number

Indicator	GTIN-13 Identification Number												
	GS1 Country Prefix			Company Number					Item Reference				C
1	8	8	5	1	7	2	7	0	0	0	0	9	0



18 851727 00009 0



GS1 System of Standards

Barcode for Traceability

Application Identifiers (AIs) / GS1-128, GS1 DataMatrix

AI	Data field	AI	DATA	DATA TITLE
00	Serial Shipping Container Code	N2	N18	SSCC
01	GTIN of Trade Item	N2	N14	GTIN
10	Batch or Lot Number	N2	X..20	BATCH/LOT
17	Expiration Date (YYMMDD)	N2	N6	USE BY or EXPIRY
21	Serial Number	N2	X..20	SERIAL

* N: numeric digit, X: Alphanumeric digit

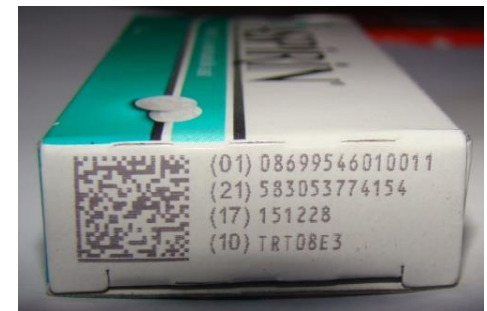
GS1-128



GS1 Data Matrix



GTIN(01): 03453120000011
EXPIRY(17): 2009-11-25 (yyyy-mm-dd)
BATCH/LOT(10): ABCD1234



GS1 System of Standards

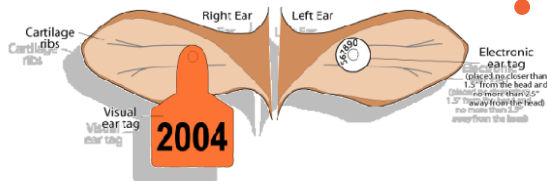
RFID (Radio Frequency Identification)



Four main 'globally established' frequencies on which RFID operates:

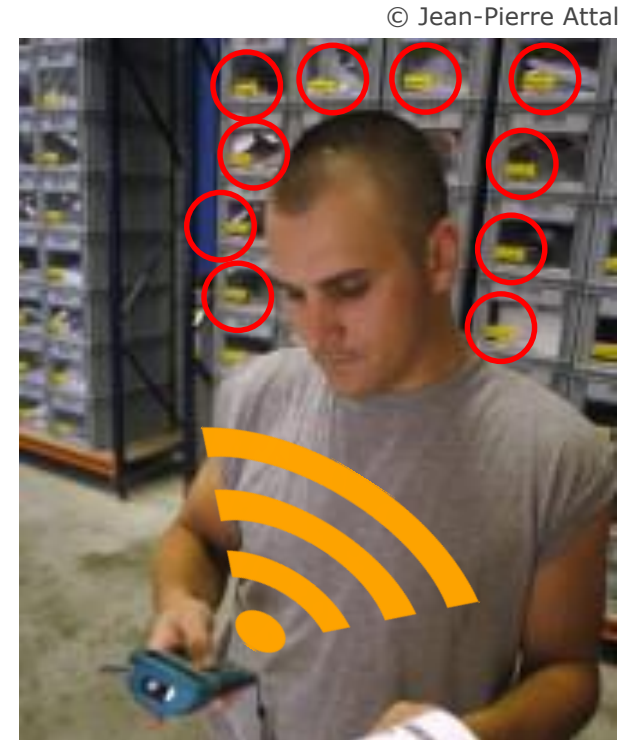
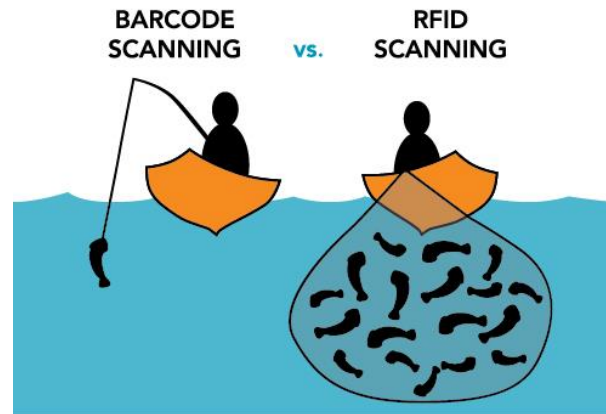
- Low Frequency (LF): 125 - 132 kHz
- High Frequency (HF): 13.56 MHz
- Ultra High Frequency (UHF): 850 - 950 MHz
- Microwave .2.4 GHz

Thailand: 920-925 MHz



GS1 System of Standards

Barcode vs RFID



Scanning Bar Codes

Scanning EPC Tags

GS1 System of Standards

VDO: EPC/RFID technology for Stock taking in Norway



GS1 System of Standards

RFID | Tag Environment



GS1 System of Standards

RFID | Implementation

Animal identification



Laundry Management



Brand Protection



Retail Inventory



Race Timing



Logistics/Security



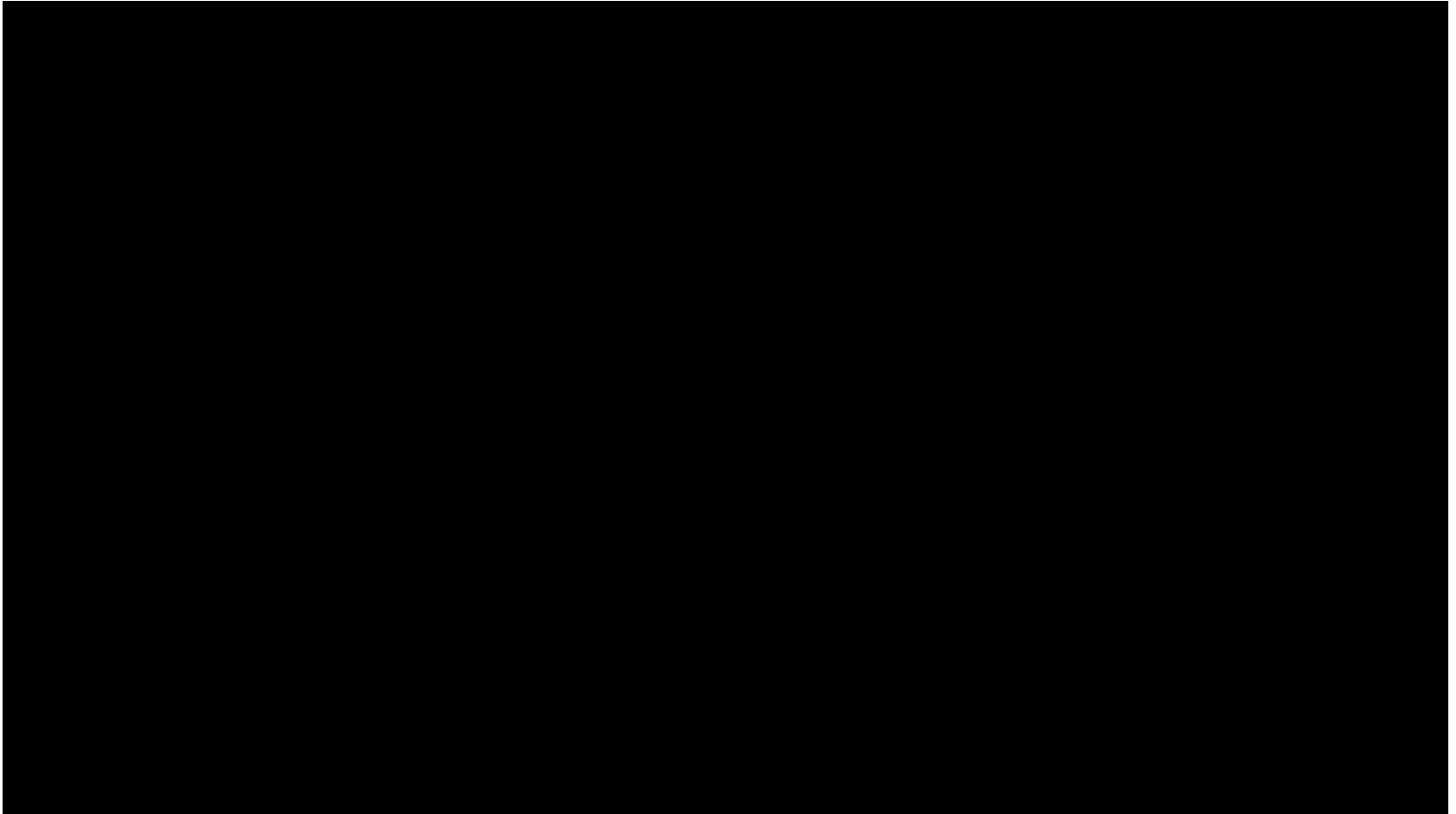
Asset Management



Cross Border



Do you know the Internet of Things (IoT) ?



Internet of Thing: IoT - Definition

IoT is a vision, not a technology

The IoT is not any single, specific new technology.
It is a framework for integrating digital technologies associated with identification, sensing and data management.

Web of Things

Internet of Everything

Cloud of Things

Web of Goods

Cyber Physical Systems (CPS)

Industry 4.0

Smart Manufacturing

Digital Industry

**Machine to Machine
Communications (M2M)**

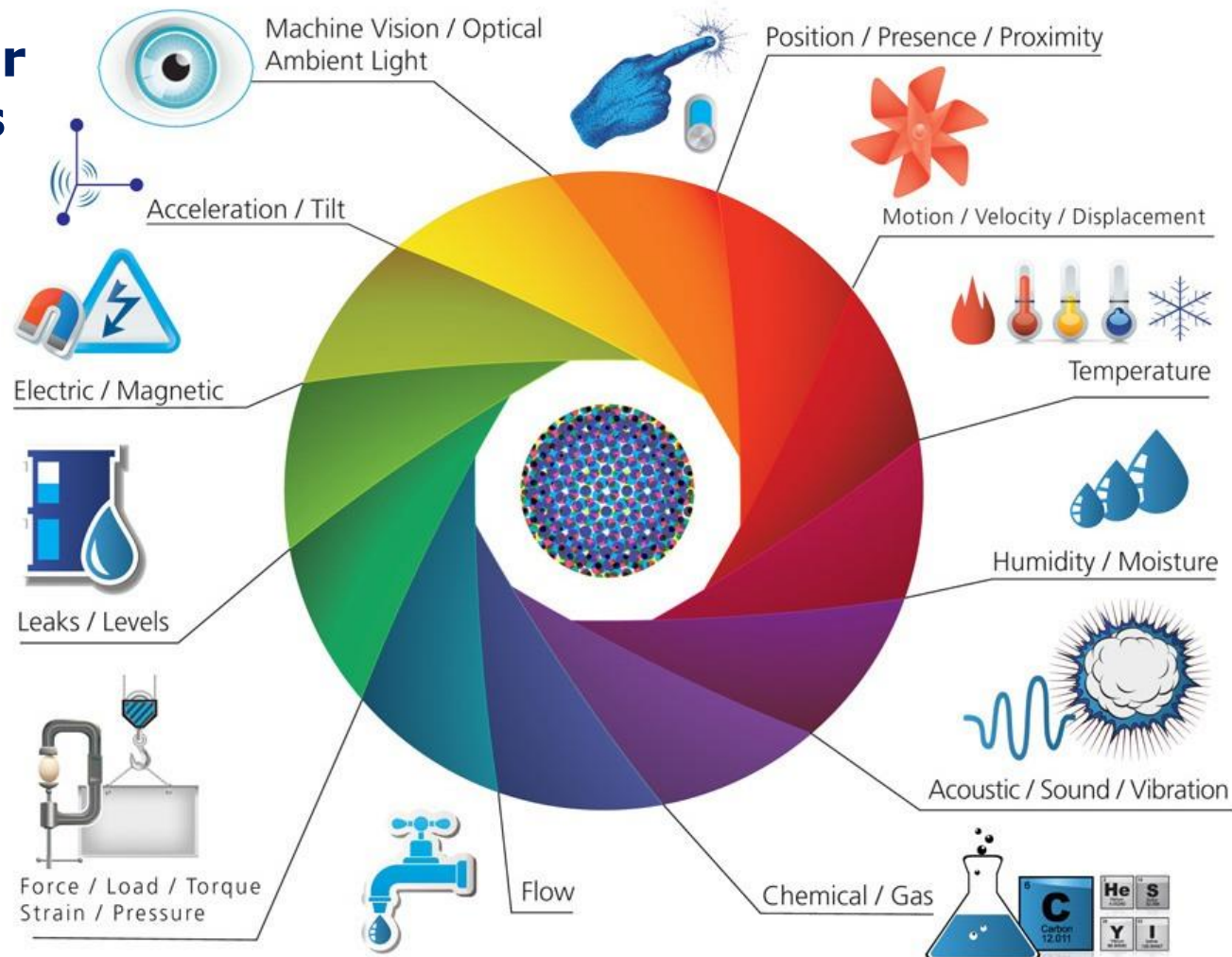
Digital Manufacturing

Automation

Made in China 2025

Internet of Thing: IoT - Technologies

IoT Sensor types



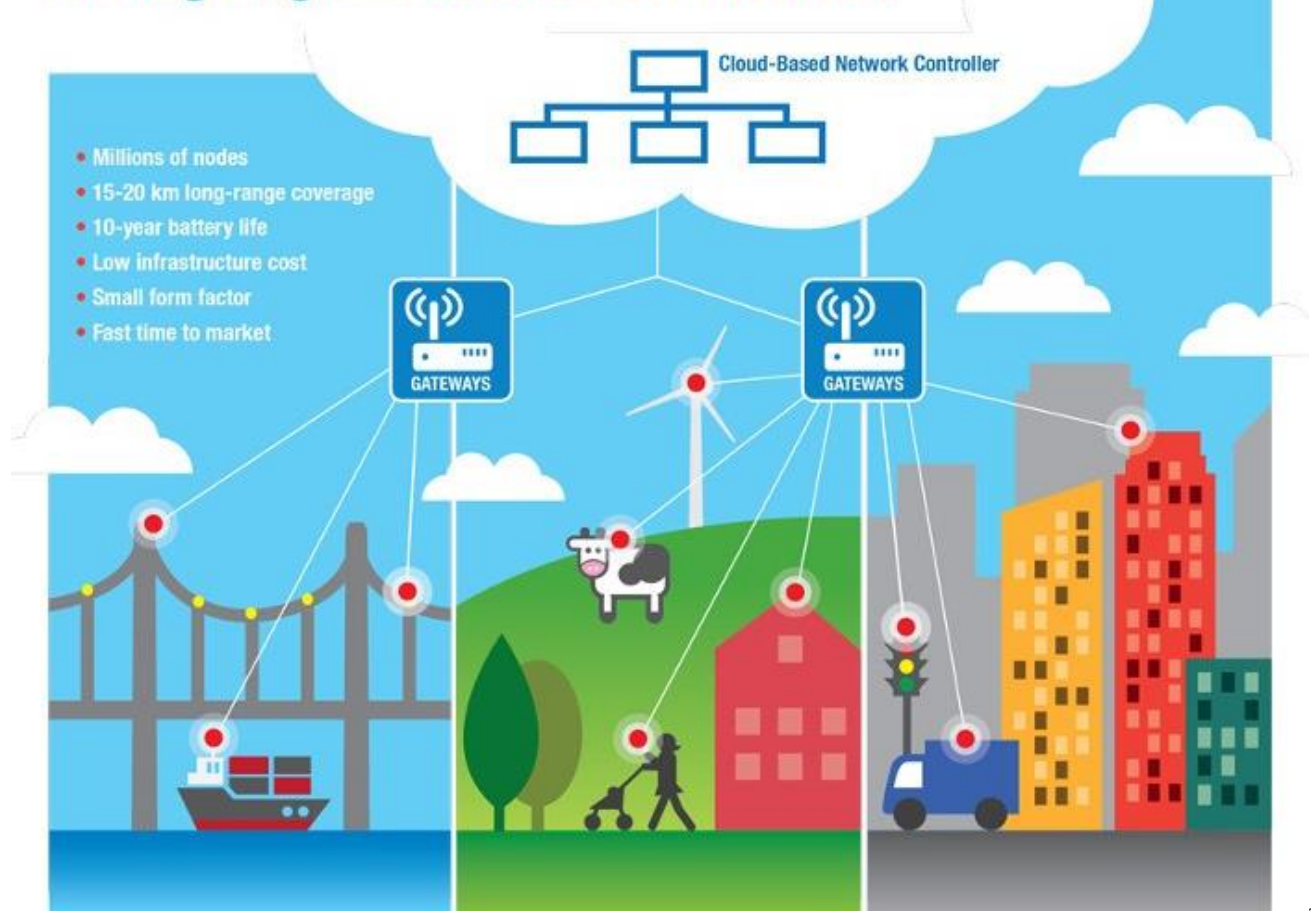
Internet of Thing: IoT - Technologies



Internet of Thing: IoT - Technologies

LoRaWAN

LoRa™ End-Node Solution For Long Range and Low Power IoT Networks.



Internet of Thing: IoT - Technologies

Radio Frequency Identification (RFID)



Source: www.impaxafrica.com

Internet of Thing: IoT - Technologies



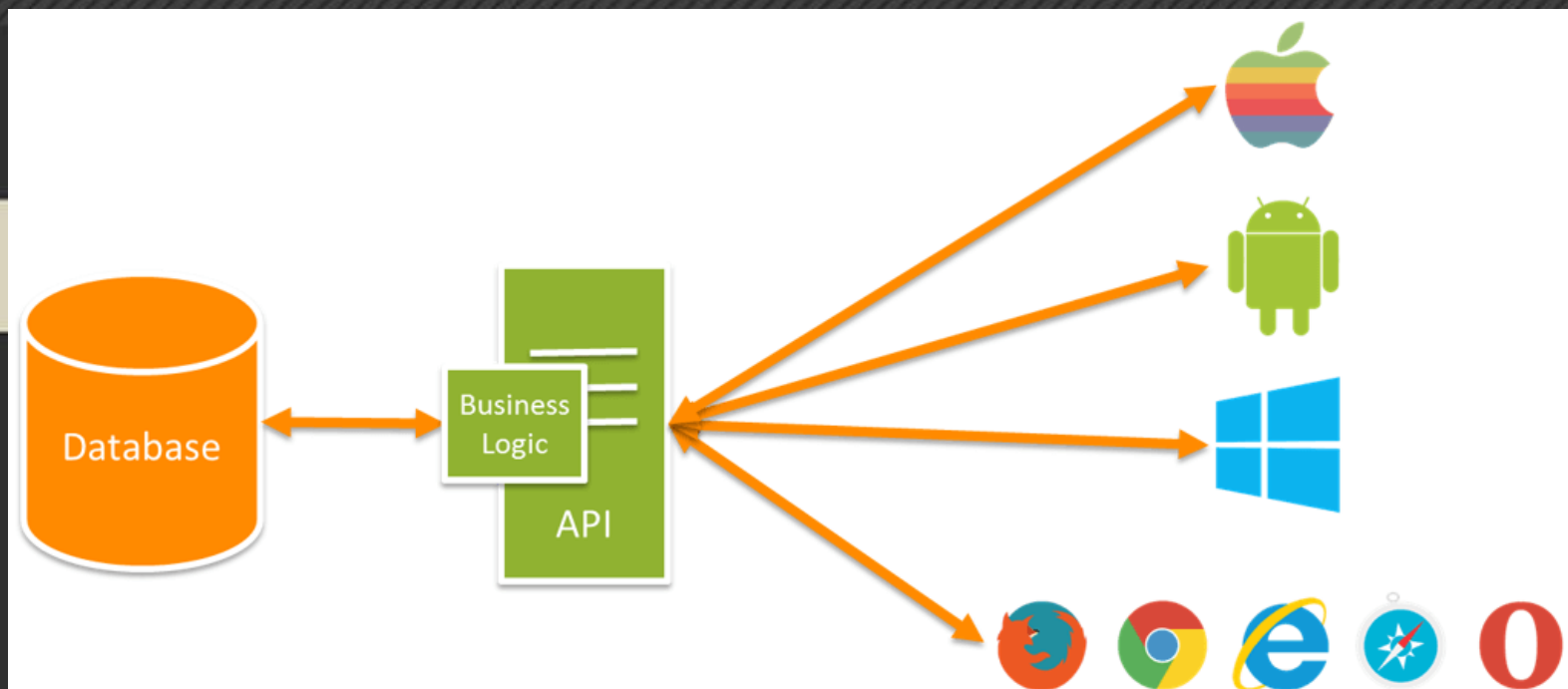
The API

Application Programming Interface



API Definition

An application program interface that provides a developer with programmatic access to a proprietary software application. A software intermediary that makes it possible for application programs to interact with each other and share data. ¹



Internet of Thing: IoT - Technologies



BIG DATA

Internet of Thing: IoT - Technologies

ARTIFICIAL INTELLIGENCE

Early artificial intelligence stirs excitement.



MACHINE LEARNING

Machine learning begins to flourish.



DEEP LEARNING

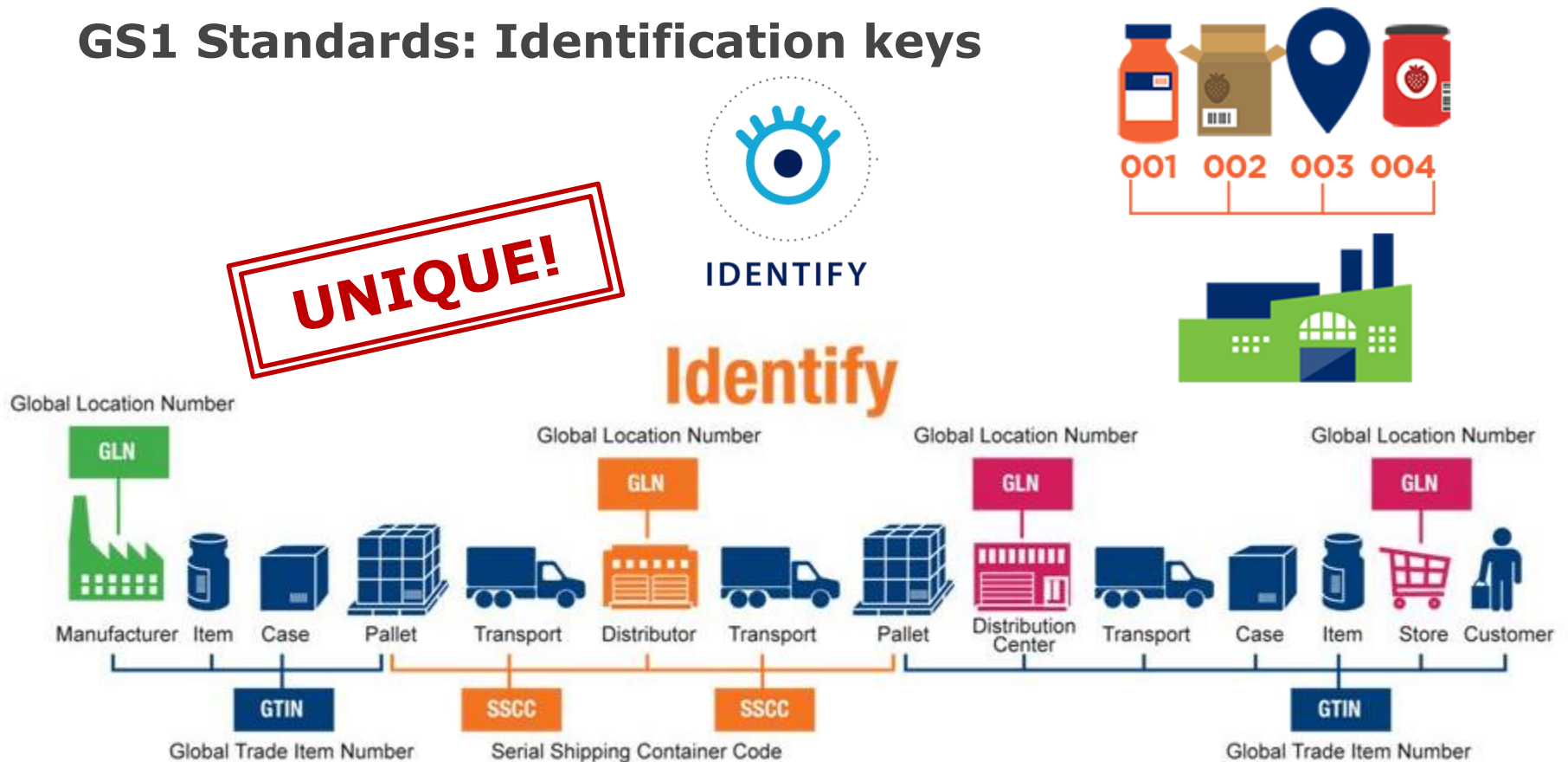
Deep learning breakthroughs drive AI boom.



Since an early flush of optimism in the 1950's, smaller subsets of artificial intelligence - first machine learning, then deep learning, a subset of machine learning - have created ever larger disruptions.

Internet of Thing: IoT - Technologies

GS1 Standards: Identification keys

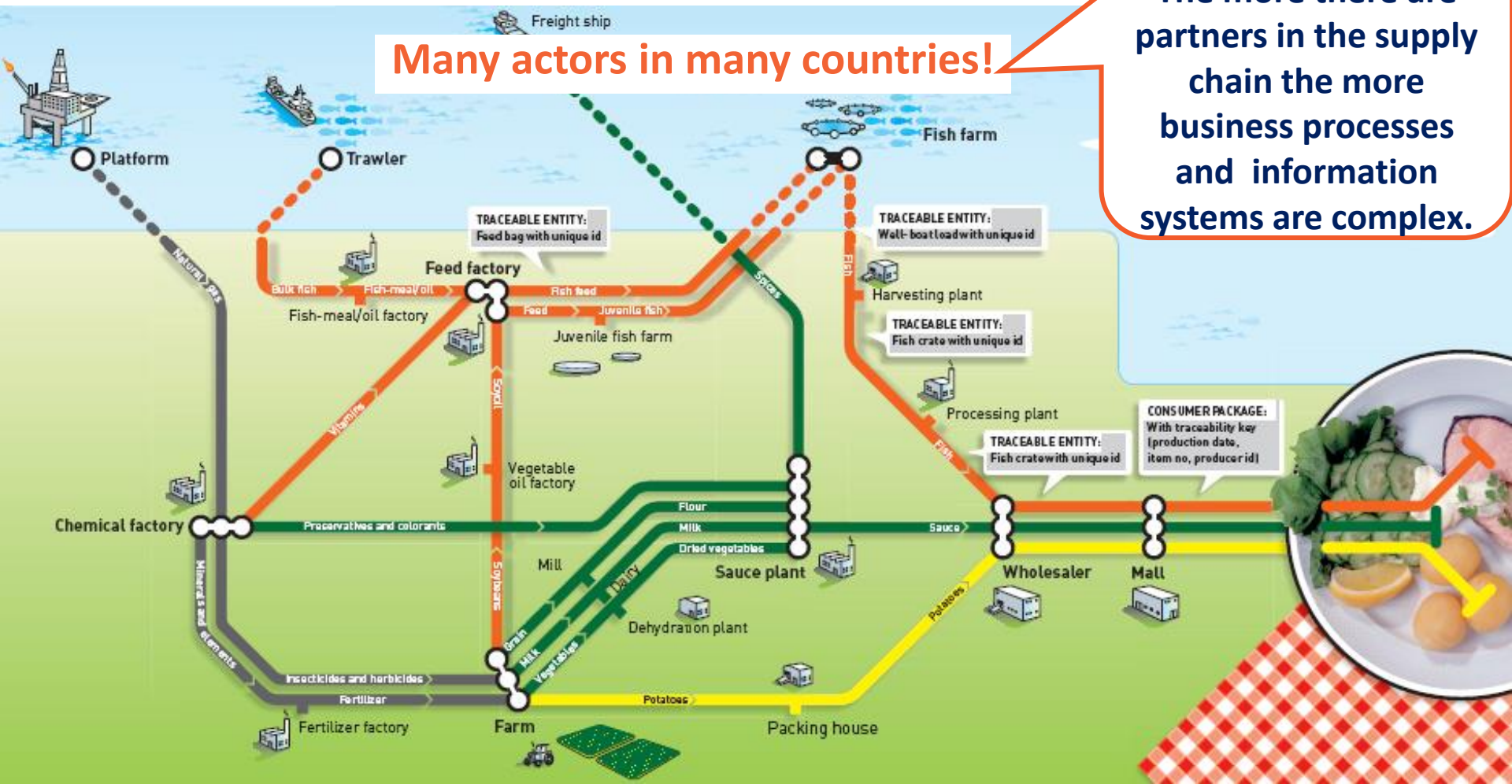


What is Traceability?

World Scenario

Many actors in many countries!

The more there are partners in the supply chain the more business processes and information systems are complex.



What is Traceability?

Crisis and Impacts



Off-quality CO₂ that affect the taste and odor and fungicide in dirty cans

1999: Soft Drink, Belgium & EU

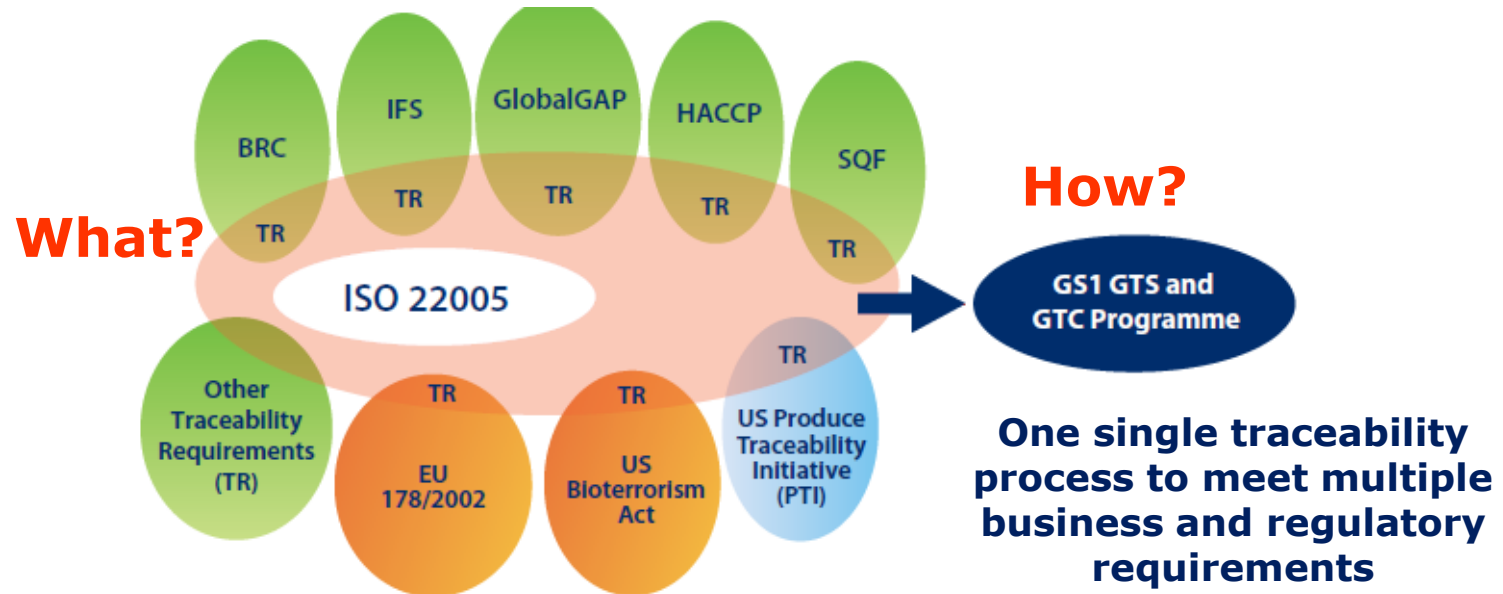
- 5 months to recover the sales
- 249 cases of illnesses in Belgium
- *Recall* of 15 million cans and bottles
- Crisis cost \$200 million in expenses and lost profit



2008: Milk Powder, China

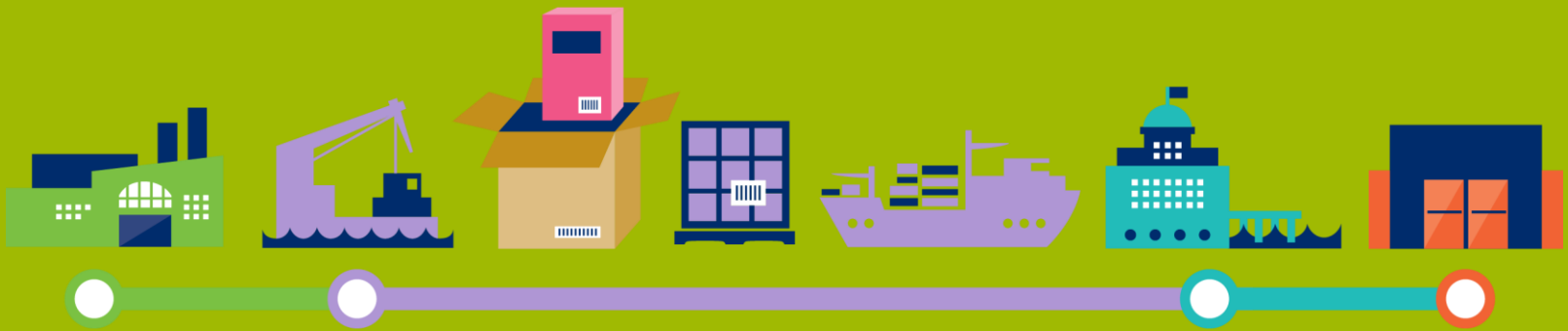
- Milk powder tainted with the industrial chemical melamine.
- 13,000 babies affected
- More than 80% of the sick were toddlers under two.
- Products from 22 companies have been *recalled* for melamine contamination.

What is Traceability?



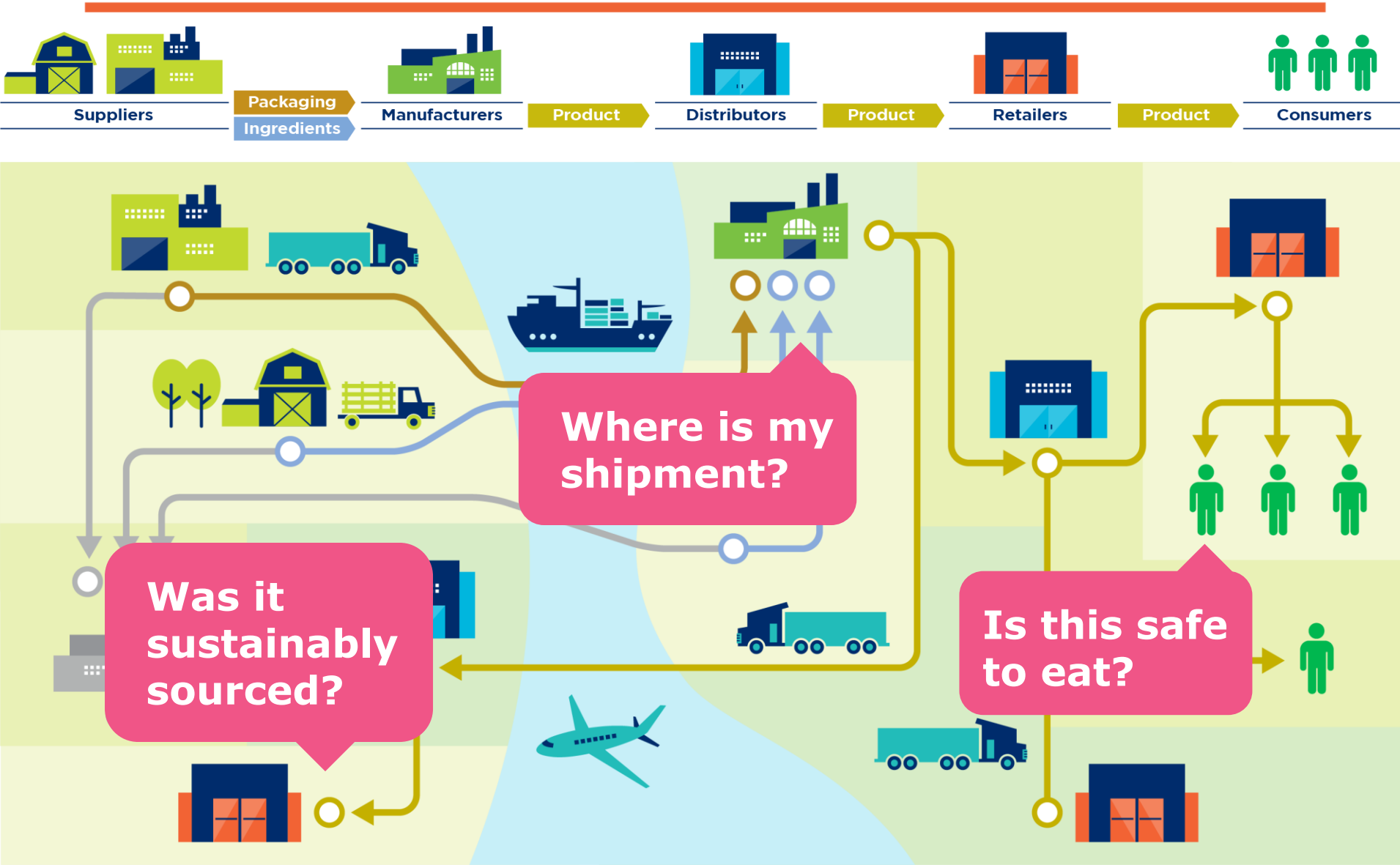
GS1 Traceability: Definition

“**Traceability** is the ability to identify the past or current location of an item, as well as to know the item’s history”



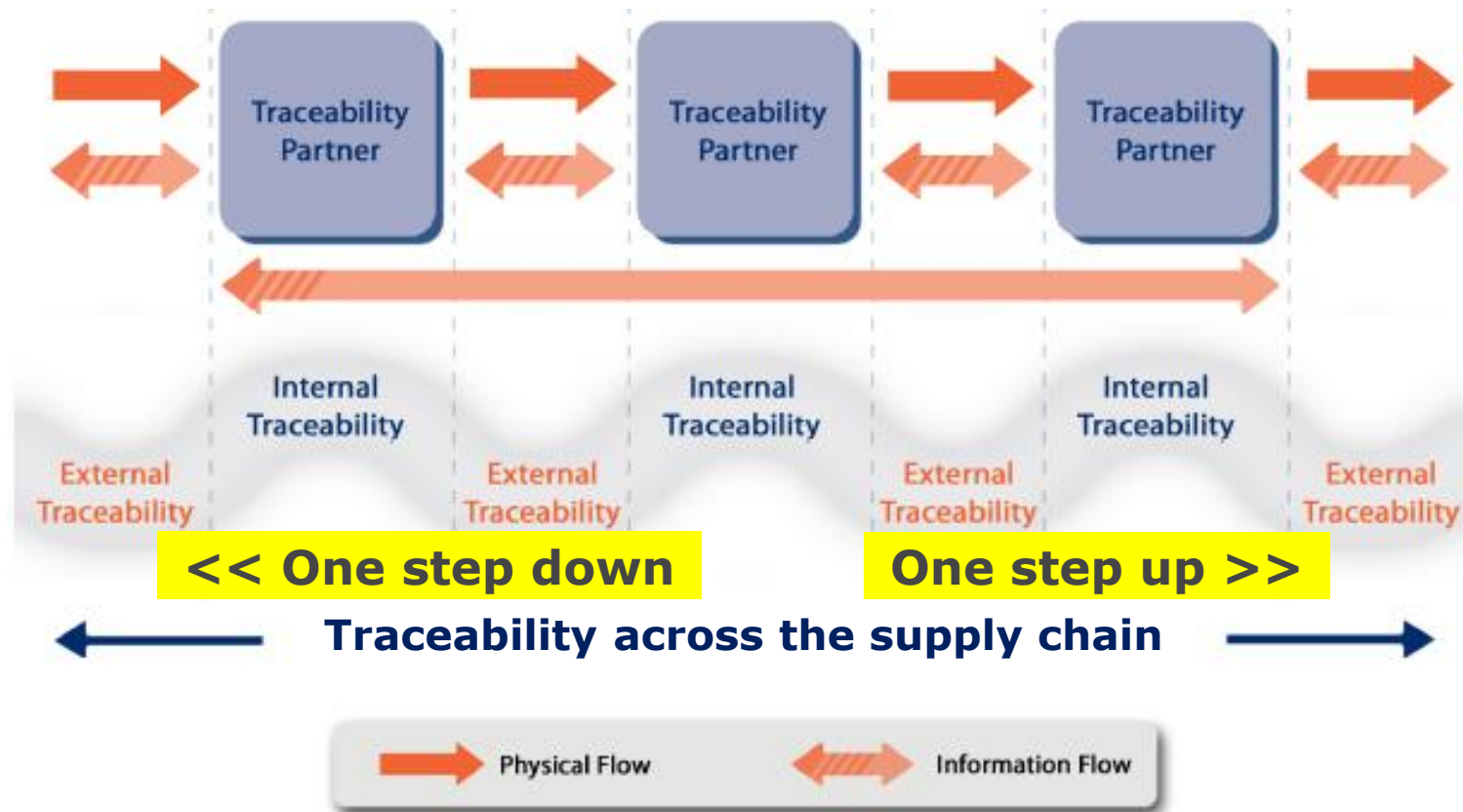
Trust starts with traceability.
Connect the dots with GS1 standards.

What is Traceability?



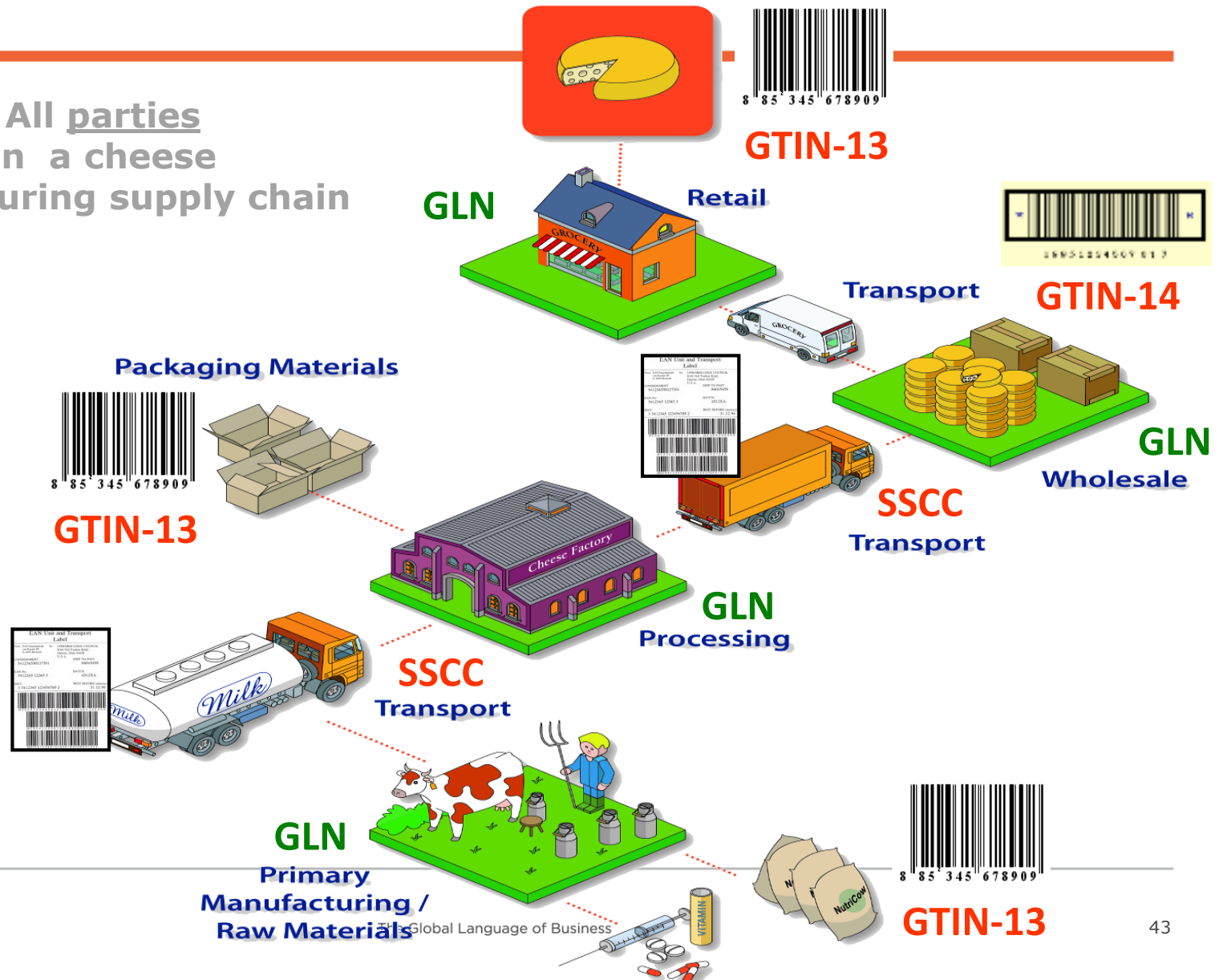
What is Traceability?

One step up and one step down principle

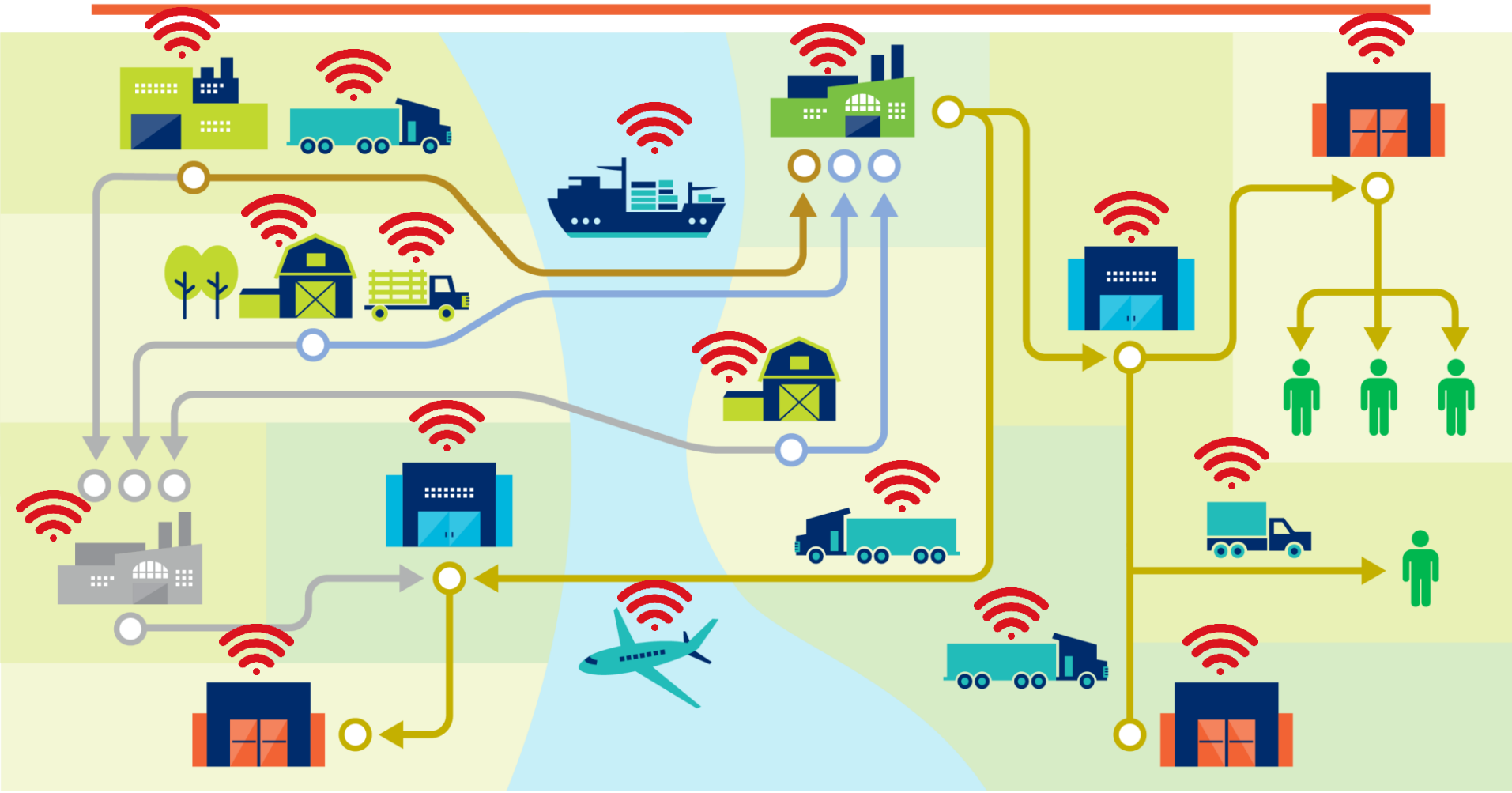


What is Traceability?

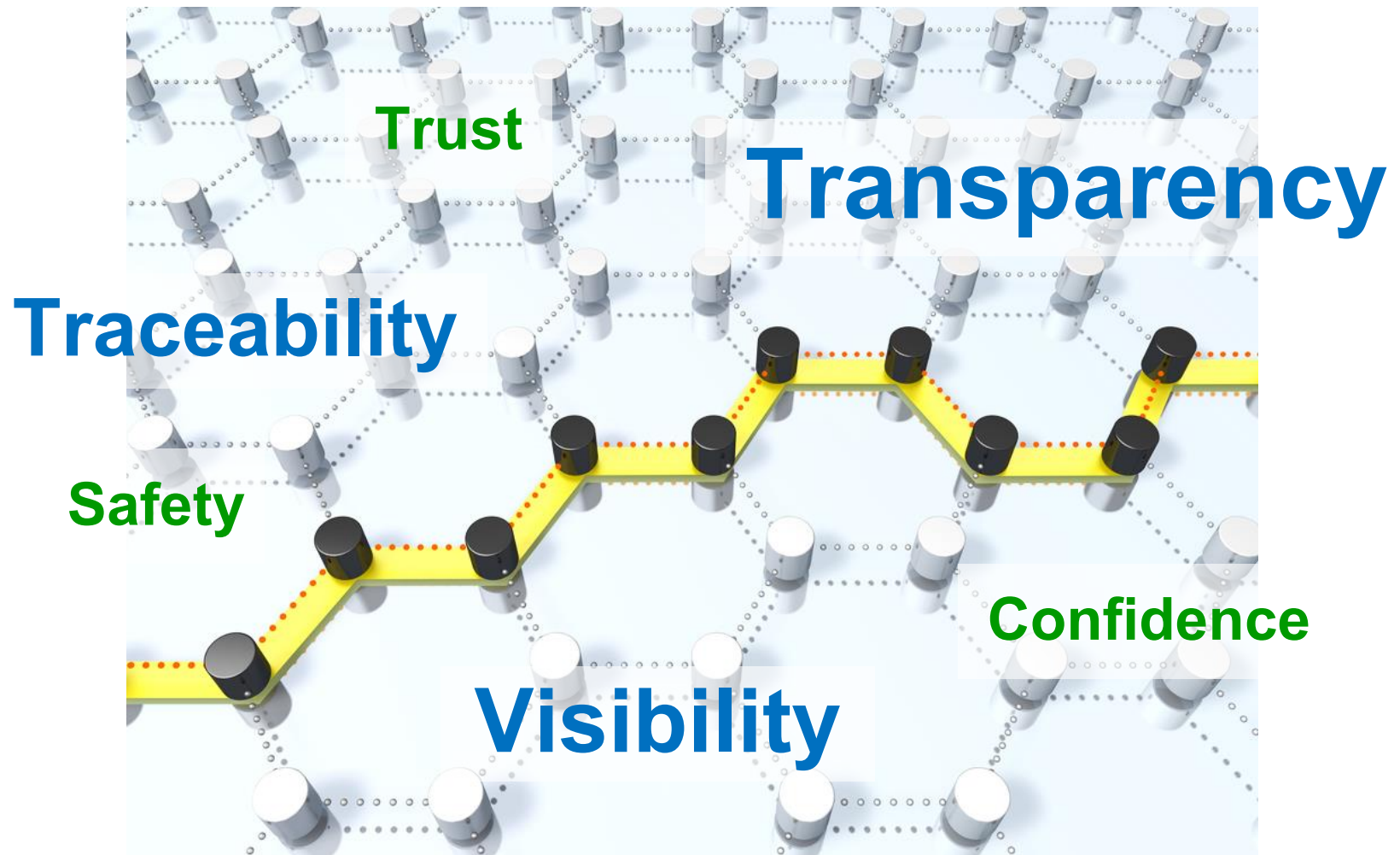
Example: All parties involved in a cheese manufacturing supply chain



Traceability 4.0



Traceability 4.0



Source: <https://applicature.com>

The Global Language of Business

Traceability regulations or recommendations in Thailand

Traceability in Thailand



- **TAS 9028-2008:** Principle for traceability/product tracing as a tool within an agricultural commodity and food inspection and certification system") was launched by **ACFS (The National Bureau of Agricultural Commodity and Food Standards, under the Ministry of Agriculture and Cooperatives)**
- This **STANDARD** is used as guidance for **authority** concerned to utilize the design and application of traceability/product tracing for agricultural commodities and food. It also supports the **protection of consumers against hazards** from consuming agricultural products and food as well as to facilitate the trade on the basis of accurate product description
- Updated version: TAS 9028-2014

Traceability in Thailand

- **TAS 9028-2008**

3.2 DESIGN

3.2.1 The traceability/product tracing tool may apply to all or specified stages of the food chain (from production to distribution), as appropriate to the objectives of the agricultural commodities and food inspection and certification system.

3.2.2 The traceability/product tracing tool should be able to identify at any specified stage of the food chain (from production to distribution) from where the food came (one step back) and to where the food went (one step forward), as appropriate to the objectives of the agricultural commodities and food inspection and certification system.

3.2.3 The objectives, scope and related procedures of an agricultural commodities and food inspection and certification system that includes a traceability/product tracing tool should be transparent and made available to competent authorities of the exporting country upon request.

3.3 APPLICATION

3.3.1 It should not be more trade restrictive than necessary.

3.3.2 It should be practical, technically feasible and economically viable within an agricultural commodities and food inspection and certification system.

3.3.3 In deciding whether and how to apply the traceability/product tracing tool, in the context of an agricultural commodities and food inspection and certification system the competent authority should take account of the assessed food safety risks and/or the characteristics of the potential deceptive marketing practices being addressed.

3.3.4 It should be able to be implemented when and as appropriate on a case by case basis.

Traceability in Thailand



- Current developments (2013): No. 365 Displaying of the term “Premium” on food labels

Clause 1 In this notification,

“Premium” means quality or standard or outstanding properties which are superior to foods in the same type.

“Agricultural products” means products from agriculture, fishery, animal culture or forestry.

Clause 2 Food labeled “Premium” must be approved by the Food and Drug Administration (Thai FDA).

Clause 3 Food labeled “Premium” on the label must comply with the following terms and conditions:

(1) Quality and standards shall comply with the relevant notification of the Ministry of Public Health.

(2) Meet the international standards or equivalent on conformity and certified processing system, from raw materials through to the finished product, including traceability.

(3) Manufactured from raw material production site and food manufacturing facilities as follows:

(3.1) Raw material production site

(3.1.1) With respect to the place of producing raw materials which are agricultural products, it must be assessed by a government agency or an agency acknowledged by the government authority for Good Agriculture Practice: GAP or

Source: <http://food.fda.moph.go.th>

Traceability in Thailand



- Current developments (2013): No. 366 Displaying of the term “Premium” on labels of Pasteurized cows’ milk and Pasteurized full fat cows’ milk

Clause 2. Displaying of "Premium" on labels of Pasteurized cows’ milk and Pasteurized full fat cows’ milk shall comply with the following criteria and conditions:

(1) Quality and standards shall be complied with the Notification of the Ministry of Public Health; Re: Cows’ Milk.

(2) Compliance with the international standards or equivalent on conformity and certified processing system, from raw materials through to the finished product, including traceability.

(3) Manufacturing from raw milk production site and raw milk collecting facilities and Pasteurized cows’ milk and Pasteurized full fat cows’ milk production establishments as follows:

(3.1) Raw milk production site shall be certified by a government agency or an agency acknowledged by the government authority for Good Agriculture Practice (GAP) or Guidelines for the Production, Processing, Labeling and Marketing of Organically Produced Foods or other equivalent standards.

Increasing request for traceability



- Regulations or trading partner requirements in many countries
- Driven by the need to increase patient safety, prevent counterfeit product entering the market
- For shared, enhanced supply chain control



Argentina



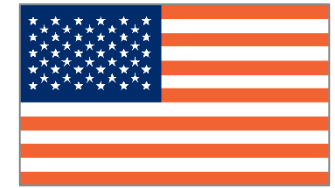
European Union



South Korea



Turkey



United States

- **Argentina - 2015: Traceability System for Medical Devices**
- **EU - 2011, 2016: Falsified Medicine Directive (FMD)**
- **South Korea - 2012, 2013, 2015: Batch variable / Serialisation**
- **Turkey - 2010: Track & Trace (Reimbursement Fraud, Traceability)**
- **USA - 2015, 2017, 2023: Drug Supply Chain Security Act (DSCSA)**

Challenges in food cold chain management

Challenges in food cold chain management

How you choose a carrier



Source: www.oceasoft.com, www.livemint.com

Challenges in food cold chain management

How you manage cold chain information

21 CFR Part 11

During your inspections, review the following factors:

- ✓ Sanitation
- ✓ Pest control
- ✓ Standard operating procedures (SOPs)
- ✓ Temperature
- ✓ Security



Challenges in food cold chain management

How you meet cold chain regulations

Increasing number of products requiring temperature control ('cold chain')



**3/4 OF
BIOLOGICAL
DRUGS**



**10-15%
SMALL
MOLECULES**



**ALL
VACCINES**



**BIOLOGICAL
SAMPLES &
DIAGNOSTICS
TOOLS**

Challenges in food cold chain management

How you monitor products in the cold chain



Challenges in food cold chain management

How you deliver goods



Traceability case in the real world

“Japanese sake traceability”

Visibility is urgent matters

Infusion problems



Vermin



Someone mixed the poison



Quality Issues



Genuine or not



Unknown product's root



Food traceability is highly required.

Food traceability is KEY



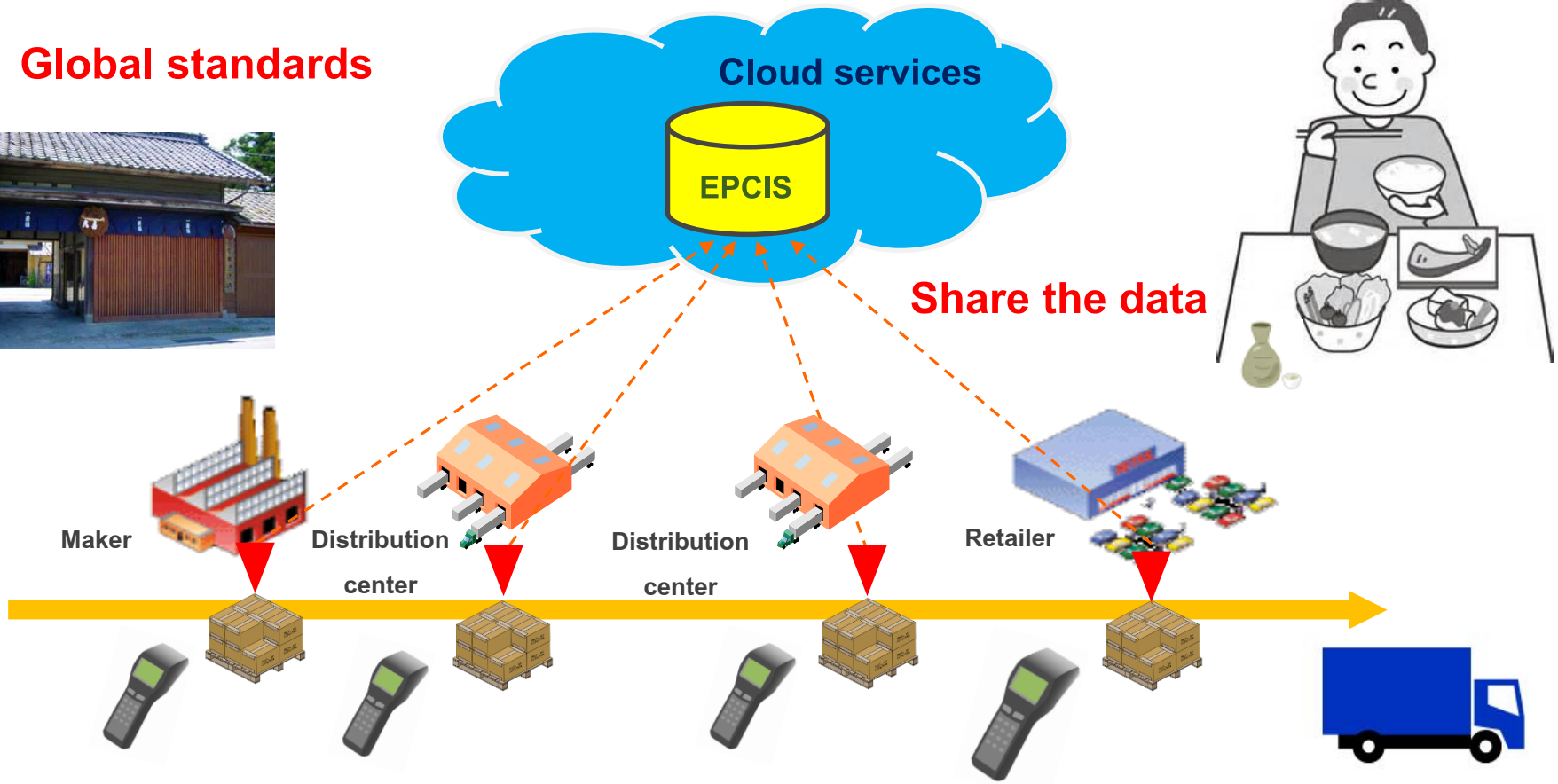
**Customers want Secure, Safe
and Good delicious food.**



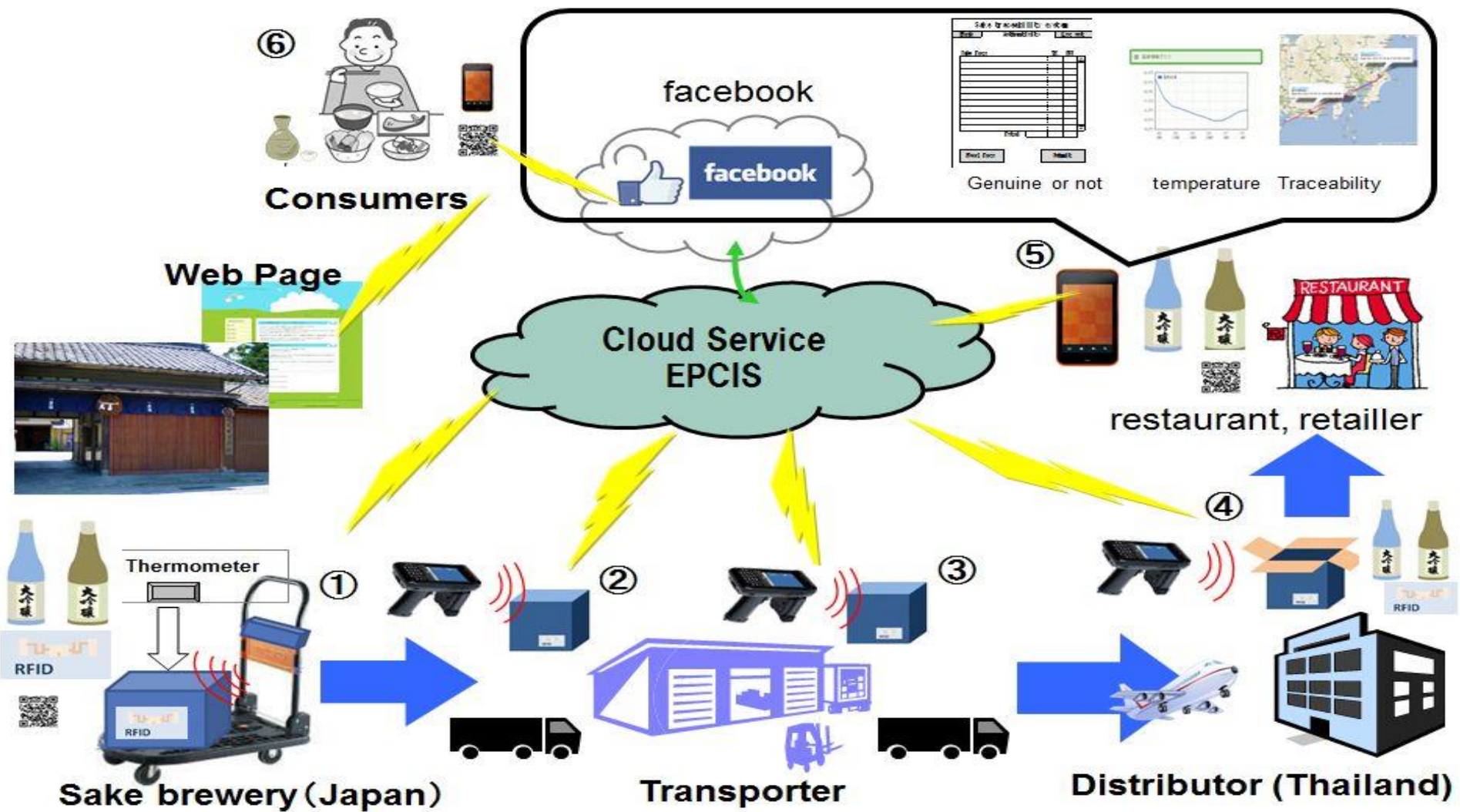
What is transportation visibility

What product are reached to the point, with when, where and why data.

Global standards



Sake traceability system



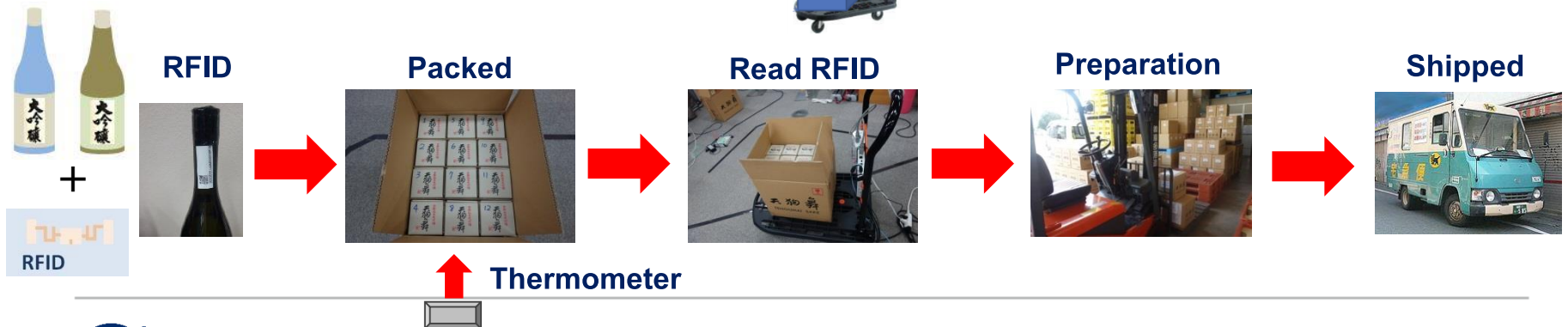
Sake Brewery



Shata Shuzo Co., Ltd.

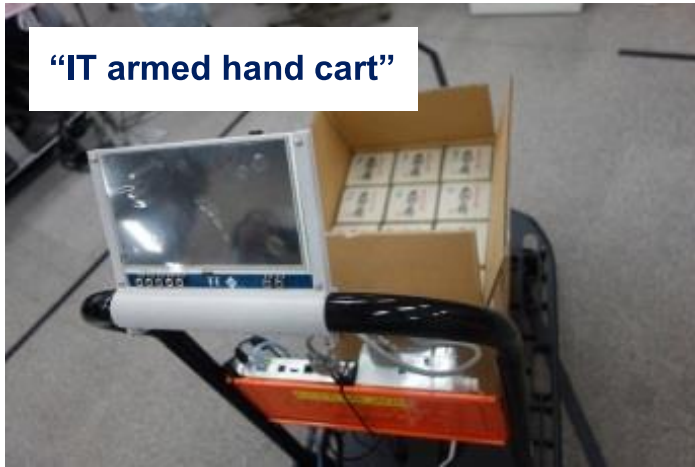


Masuda Shuzo Co., Ltd.

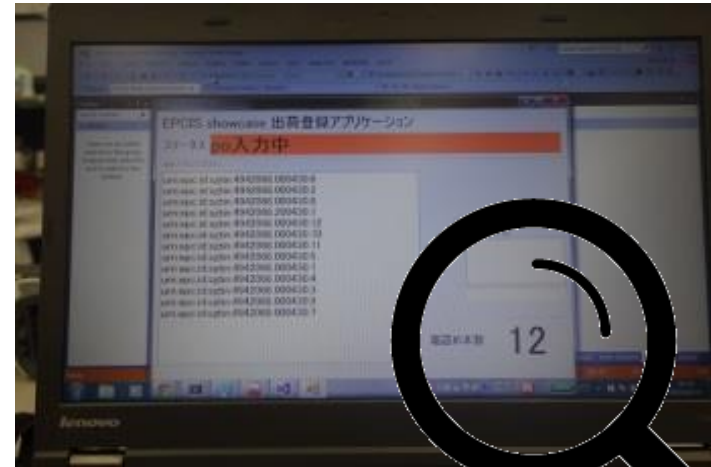


Sake Reader (IT armed hand cart)

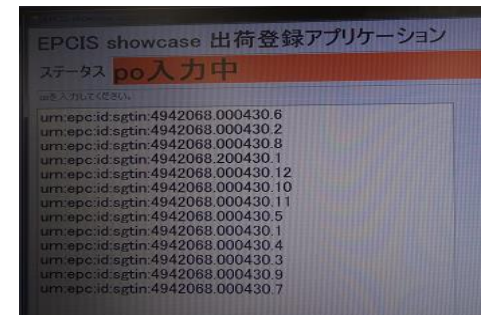
“IT armed hand cart”



Sake Reader



Reading results



Transporter (Narita airport warehouse)

Warehouse



Arriving



Stocking



Cut the tag intentionally



Read tags



Shipment



Distributor (Thailand Sake Agent)

Arrival



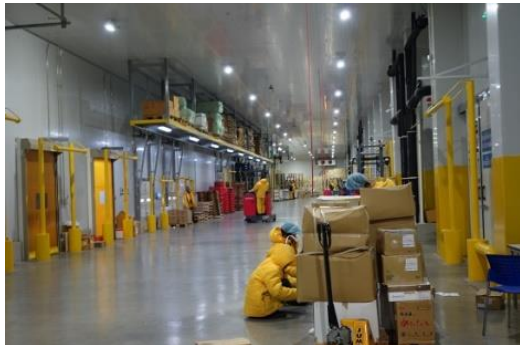
Warehouse



Receiving



Reading Tags



Restaurant & Retail store



Restaurant



Retail Shop

Sake page

Temperature



Restaurants (Sake information)

Identify particular bottle

Sales points

Temperature

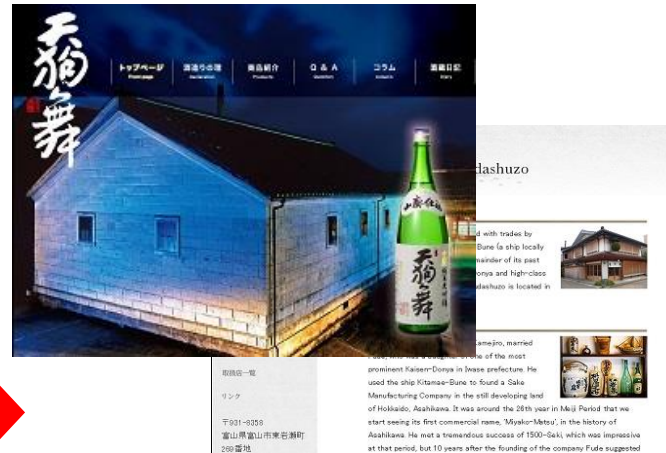
Traceability

Recipe



QR code

RFID & QR code identify particular bottle from serial #



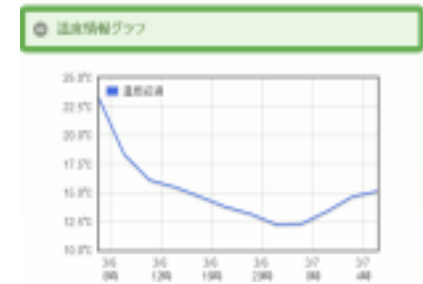
Particular bottle's data



Production date

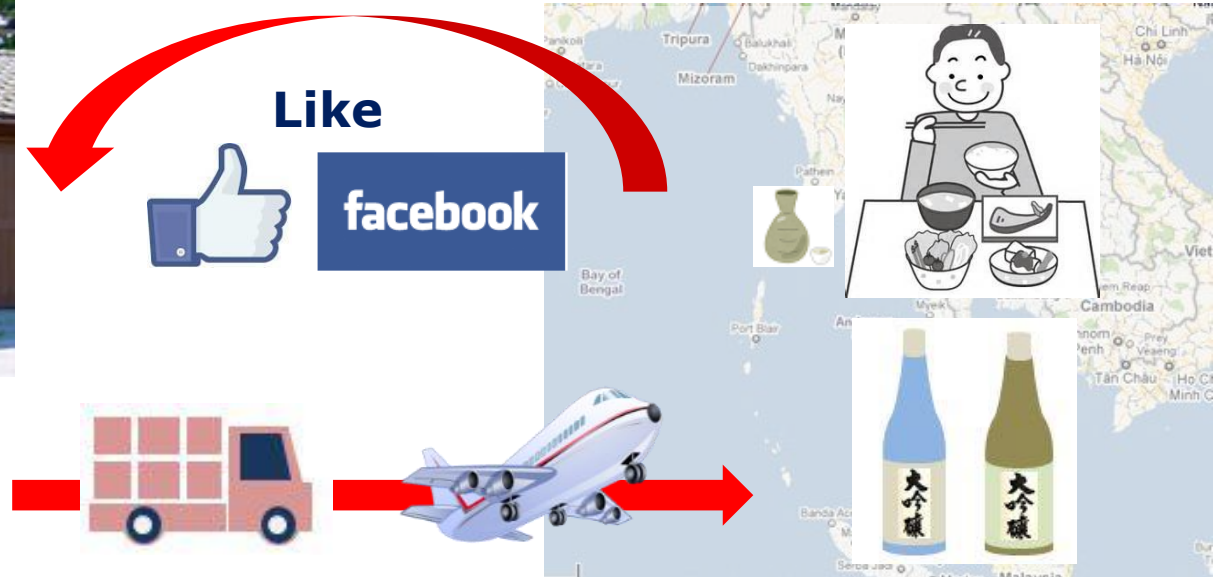
Lot number


Serial number



Consumer (Facebook)

Feedback opinions



facebook  **I really love this Japanese Sake,**
Like **especially this is best match for beef.**

Collaborations with

GS1 Thailand

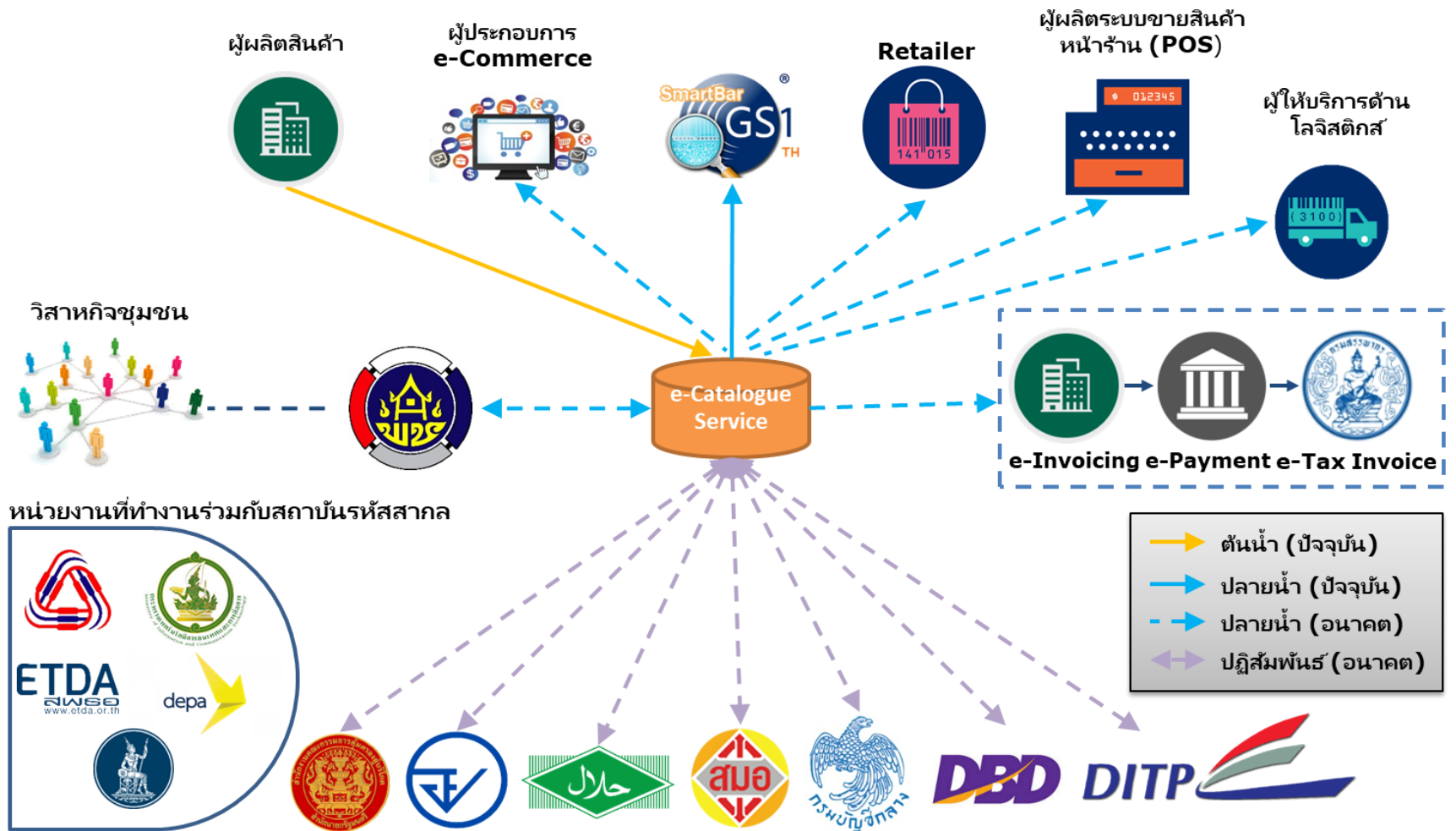


SCS trading

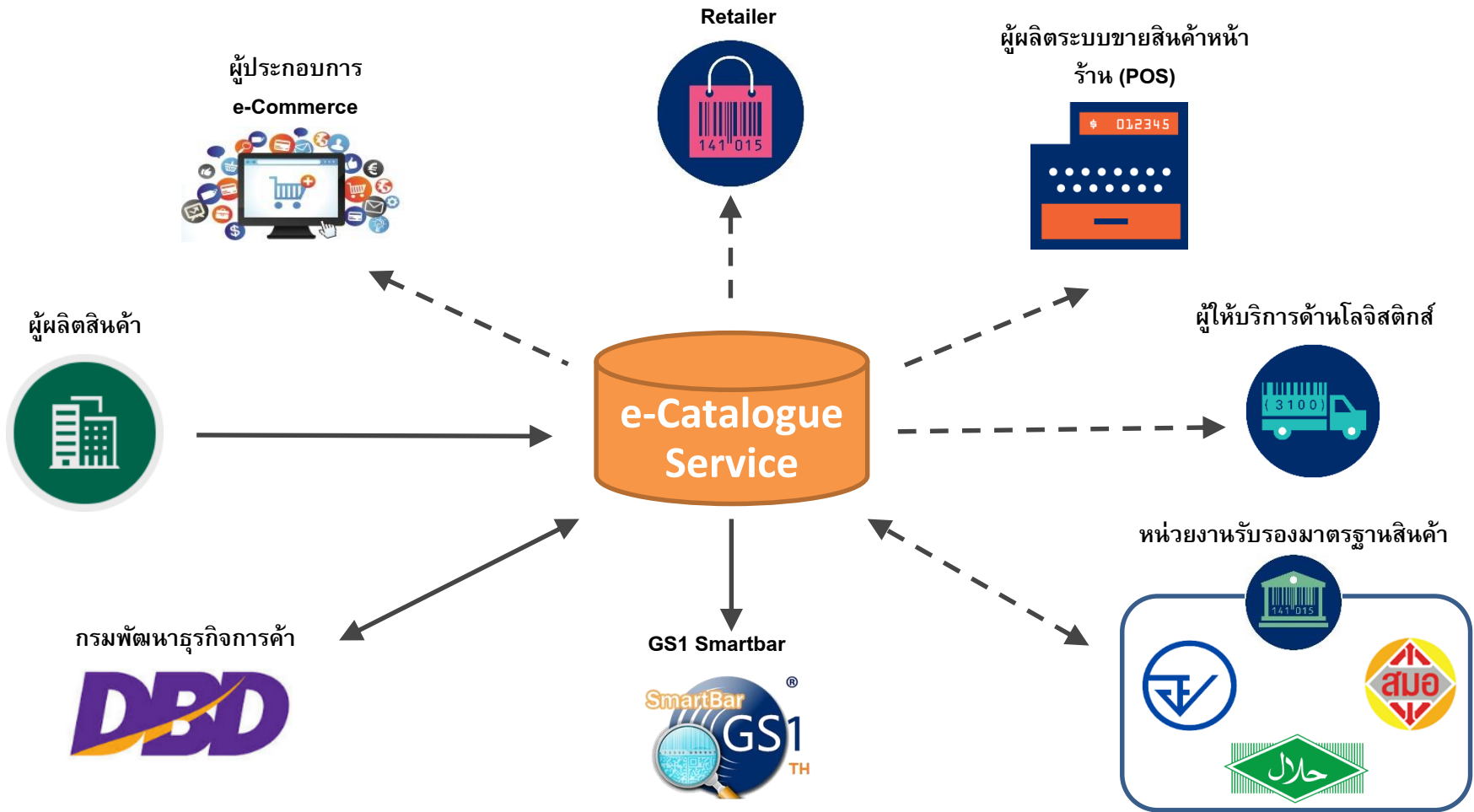


GS1 Thailand Services: e-Catalog, SmartBar application and Commercial service

e-Catalog Service: Final



e-Catalog Service: Phase I



SmartBar Application

Free
Download



Food and Drug
Administration
13-1-03938-1-0001



Business type: Beverages/Food
Country: THAILAND
Website: <http://www.thainamthip.co.th/>

“Download - Scan – Check”



Coca Cola
GTIN :
8851959132012

โค้ก...คอโค้ก คอเดียวกัน โค้ก...ต้องโค้กซิ

Short description:
Ingredient:
Website: <http://www.thainamthip.co.th>
Catalogue price: ฿ 0

Thai Numthip Ltd.
GLN : 8851959999998

Commercial services



GS1 Thailand - Vendor Alliance 2018

Alliance Platinum



Alliance Gold



Alliance Silver



Alliance Associate



Contact



GS1 Thailand, The Federation of Thai Industries

**Queen Sirikit National Convention Centre Zone C, 3rd Fl.,
60 New Rachadapisek Road,
Klongtoey, 10110 Bangkok, Thailand.**

Tel: 02-345-1193-8, 1208

Fax: 662-345-1217-8

Email: info@gs1thailand.org

Website: www.gs1thailand.org, www.rfid.or.th

Facebook: [gs1thailand](#), [rfid.thailand](#)



Q&A

Thank you